

X200D small disperser, equipped with a 200W high-power motor, microprocessor electronic speed regulation, wide speed range of 5,000–30,000rpm, and LED digital display. It can process 0.5–600ml of sample solution in a short period of time, especially for handling trace samples, making it an ideal choice for handheld or desktop operations in biological, pharmaceutical, and medical laboratories.

## X200 D Handheld Disperser

Handheld or Desktop | Digital Speed Display



### High Performance

- High power, strong torque, long-lasting operation
- High-performance motor and microprocessor ensure precise and stable speed control

### Speed

- LED digital display, which can clearly and intuitively display speed values
- Wide speed range for low & high-speed homogenization

### Humanized

- Ergonomic design, comfortable grip, easy one handed operation
- ClickLock quick-plug interface makes it convenient and fast to install tools
- External carbon brush design, easy to maintain

### Dispersion Tools

- 12 types of tools to meet the needs of diverse samples (Standard /Serrated /Fiber /Turbulent ,etc.)
- Simplified structural design, no need for specialized tools for disassembly and assembly, easy and fast cleaning
- Specially made Polyflon™ PTFE shaft sleeve,excellent wear resistance and chemical stability
- Resistant to chemical, steam and dry heat sterilization

### Disperser Stand

- Optional Stand for long-term fixed operation or temporary storage

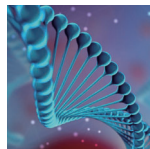
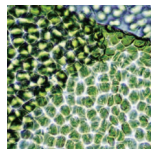
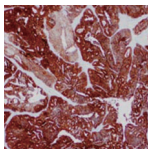
### Quality Assurance

- CE Certified; 1-Year Warranty

# Handheld Dispenser | X200 D



Project Name	Technical Data
Model	X200 D
Order Number	22232.02
Drive Motor	Carbon Brush
Input Power	200W
Speed Range	5000~30000rpm
Speed Step	1000rpm
Speed Display	LED Digital Display
Volume range(H <sub>2</sub> O)	0.5~600ml
Maximum Viscosity	6000mPa.s
Maximum Line Speed	12.5m/s
Working Hours	≤15min (T14)
Blade Diameter	∅ 5, 7, 10, 12, 14mm
No-load Noise	74dB (A)
Sample-contacting Material	AISI 316L/PTFE
Sample Solution PH Contact	2~13
Processing Type	Batch
Dimensions (Driver)	∅ 52×H250mm
Weight	680g
Working Environment	5~40°C, ≤85%RH
Rated Voltage	AC 220~240V, 50/60Hz



- Fine homogenization and dispersion of animal and plant tissues in buffer solutions
- Efficient lysis of animal and plant cells, microorganisms, and enzyme sources.
- Extraction of active pharmaceutical ingredients (APIs) from pills or tablets.
- Efficient preparation, dispersion, and stability optimization of emulsions and suspensions.
- Preparation of uniform and stable suspension for biological vaccine injection.
- Sample Prep for Medical PCR & Nucleic Acid (RNA/DNA) Analysis.
- Bio-gene, enzyme research, protein extraction & cell disruption.
- Extraction of components from food or natural products.

# Handheld Dispenser | X200 D

## Standard Type S

Special geometric stator, paddle/double-toothed blade rotor, large vortex, uniform sample dispersion. Applicable to shearing, dispersing, dissolving, mixing and homogenizing most samples.

Order No.	Model	Diameter/Length	Volume Range
130511	T5S	∅ 5mm/80mm	0.5~10ml
130711	T7S	∅ 7.8mm/110mm	0.5~50ml
131011	T10S	∅ 10mm/120mm	1~100ml
131211	T12S	∅ 12mm/120mm	1.5~200ml
131411	T14S	∅ 14mm/160mm	5~500ml



## Serrated Type W

Sawtooth and slotted stator, double-toothed blade rotor, high shear force. Applicable to shearing, dispersion, mixing and homogenization of most samples, especially animal and plant tissues and fine fiber samples.

Order No.	Model	Diameter/Length	Volume Range
130521	T5W	∅ 5mm/80mm	0.5~5ml
130721	T7W	∅ 7.8mm/110mm	0.5~50ml
131021	T10W	∅ 10mm/120mm	1~100ml
131221	T12W	∅ 12mm/120mm	1.5~200ml
131421	T14W	∅ 14mm/160mm	5~500ml



## Fiber Type F

"V"-tooth stator prevents soft/filamentous fibers entangling in cutter. Applicable to shearing, homogenizing high-fiber samples, stirring, mixing, dissolving high-viscosity samples.

Order No.	Model	Diameter/Length	Volume Range
131431	T14F	∅ 14mm/160mm	5~500ml



## Turbulent Type M

Fluid mechanics design, stator inclined holes and moving blades form good vortices, efficient heat transfer, low shear and heat. Quickly remove foam and supernatant particles. Applicable to mixing and dissolving medium and high viscosity samples.

Order No.	Model	Diameter/Length	Volume Range
131441	T14M	∅ 14mm/160mm	5~600ml



## Drive

Order Number	Description
22232.02	X200D Driver: AC230V, 50/60Hz, 200W. Includes main unit, wrench, operation manual, warranty card, certification of conformity



## Standard Set

Order Number	Description
21063.02	X200D driver, T5W serrated tool, ST10 basic stand
21064.02	X200D driver, T10W serrated tool, STL1 single-rod stand



## Dispenser Stand

Order Number	Description
170109	ST10 basic stand, POM resin, L150 × W200 × H310mm, safe, convenient temporary placement and storage
170110	STL1 single-rod stand, aluminum alloy, L200 × W310 × H600mm, adjustable up/down, suitable for handheld dispenser fixed use



## Accessories

Order Number	Description
173010	CT15 test tube holder, clamping range $\varnothing$ 10–25mm, for 15ml centrifuge tubes or equivalent containers
173020	CT50 test tube holder, clamping range $\varnothing$ 20–40mm, for 50ml centrifuge tubes or equivalent containers
171400	CT80 beaker holder, clamping range $\varnothing$ 38–85mm, for beakers or equivalent containers



Retain technical modifications

More accessories available at our website: [www.disrad.com](http://www.disrad.com)